

QBSA hosts Latin show

QBSA (102.9 FM) will host the "BSA Latin Connection" from 7 p.m. to 9 p.m. Friday at their studio on Thomas Road. The party will be complete with a two-hour radio program featuring Latin music, DJs, and dialogue about Scouting abroad and in the United States. The intent is to broaden Scouting horizons and help recruit youth into Scouting. Everyone is welcome to come enjoy the music, dancing, and to practice their Spanish-language skills. For more information, contact **Michael J. Thorp** at 810-610-7468. ♣

Leave No Trace adds new program

Leave No Trace is expanding to include activities such as snow boarding and ATVs through a new program called "Outdoor Ethics." If you are interested in learning more about this program, stop by Action Area C any time. The Tread Lightly organization, along with the LNT Center for Outdoor Ethics, will preview the changes. If you complete the activity, you will receive the 100th Anniversary hangtag.

For more information contact **Bill Nay** at 707-235-1900. ♣

Religious services for Friday, Saturday, and Sunday

Here is a listing of religious services scheduled for Friday, Saturday, and Sunday. You can also see a complete list at <http://leadersupdate.bsajamboree.org>. **Times for all services are 9 a.m. unless noted.**

FRIDAY

Jewish Worship progressive service
Chaplain's activity tent at Chaplain's Headquarters, 7 p.m.

Jewish Worship traditional service
Synagogue tent, Subcamp 5, 7:35 p.m.

SATURDAY

Jewish Worship traditional service
Synagogue tent, Subcamp 5, 9 a.m.

Jewish Worship progressive service
Chaplain's activity tent at Chaplain's Headquarters, 9:30 a.m.

Catholic Mass for the military

Chaplain's activity tent at Chaplain's Headquarters, 5 p.m.

SUNDAY

Roman Catholic service
Jamboree arena

Protestant service (west location)
Southern Region Stage

Protestant service (east location)
Between Subcamps 2 and 3 on west side of Engineer Road

The Church of Jesus Christ of Latter-day Saints
Rhodes Camp (adjacent to Subcamp 8)

United Methodist service
Mosby Road near orchard and intersection with A.P. Hill Drive

Lutheran service
Across A.P. Hill Drive from flag plaza at Heth headquarters

Church of Christ service A
Subcamp 15 staff dining tent

Church of Christ service B
Thomas Road staff dining tent adjacent to Trading Post B

Church of Christ service C
Subcamp 6 staff dining tent

Church of Christ service D
Near Subcamp 19 staff dining tent

Church of Christ service E
Subcamp 20 staff dining tent

Episcopal service
Fish Hook Lake (picnic tables)



Christian Scientist service
Chaplains activity tent 2 near Merit Badge Midway

Friends/Quaker service
Oak Grove at Fish Hook Lake

Christian Church (Disciples of Christ) service
Behind National Exhibits tent

Buddhist service
Across from Trading Post C

Eastern Orthodox service
Main hall of Heth Schoolhouse

Community of Christ service
Thomas Road across from Subcamp 10

Sunday morning Jewish Traditions program
Synagogue tent, Subcamp 5

Islamic service
Mosque tent near visitors' entrance

Interfaith Forum, Islamic Committee on Scouting
Mosque tent, 11 a.m.

Interfaith service
Visitor parking lot adjacent to Merit Badge Midway

Church of God/ Assemblies of God/ Pentecostal
Liberty Church on Travis Lake Road

Unitarian Universalist service
OA Dance Ring

Joint Task Force Ecumenical service
Chaplains activity tent, 11 a.m. ♣

Please POST and Share

The Leaders' Guide to the Jamboree

National Scout Jamboree Volume 17, Issue 5

Friday, July 30, and Saturday, July 31, 2010

Troop step-off times for Saturday arena show

Here is the list of times for troops to leave their campsites for Saturday's arena show.

Doors at the arena open at 4:30 p.m.; the last person should be seated by 7:30 p.m.; and walk-out time is 10:40 p.m.

Questions should be directed toward your subcamp headquarters staff. ♣

Northeast Region	Western Region
2 hrs walking time	1 hr walking time
#1 4:30 p.m.	#6 6:15 p.m.
#2 4:45 p.m.	#7 6:00 p.m.
#3 5:00 p.m.	#8 5:45 p.m.
#4 5:15 p.m.	#9 5:30 p.m.
#5 5:30 p.m.	

Central Region	Southern Region
1.5 hrs walking time	2.5 hrs walking time
#14 5:00 p.m.	#19 4:40 p.m.
#13 5:15 p.m.	#17 4:35 p.m.
#12 5:30 p.m.	#18 4:30 p.m.
#10 5:45 p.m.	#16 4:50 p.m.
#11 6:00 p.m.	#15 4:35 p.m.
	#21 4:15 p.m.
	#20 4:15 p.m.

See page 3 for suggested arena show checklist and safety tips.



Troop 1423 of the Bay-Lakes Council leads a group of Central Region Scouts mobilizing for the opening arena show at the 2010 National Scout Jamboree at Fort A.P. Hill.

The Centennial Celebration

Celebrate a century of Scouting

Jet flyovers, celebrity appearances, music, dance performances, and various videos highlight Saturday's Centennial Celebration arena show, a celebration unlike any other in jamboree history.

The arena opens at 4:30 p.m. with music from QBSA (102.9 FM) along with safety messages showing on the big screen. Pre-show begins at 5:25 p.m. with an F-15 flyover and steel drum performance by Trinidad and Tobago. T-shirt prizes will be shot out of cannons as Scouts enter the arena.

The show starts at 8 p.m. as cauldrons are lit. Chief Scout Executive Bob Mazuca will give a presentation, entitled "Celebrate The Future of BSA." Highlights of the show include an appearance by Eagle Scout Mike

Rowe, host of Discovery Channel's *Dirty Jobs*, music from Switchfoot, and a spectacular fireworks display. The show is scheduled to end at 10:20 p.m.

Everyone attending the show needs to be properly hydrated.

Dinner on Saturday will be similar to a lunch kiosk meal. Troops and subcamp staff will receive their dinner with the breakfast delivery Saturday morning. Staff who eat at the dining halls will pick up their dinner during breakfast at their assigned dining hall. Staff who miss breakfast can pick up their dinner between 3:30 p.m. and 4:30 p.m. at Wilcox and Longstreet dining halls, or from the large truck on the south side of the Heth Schoolhouse.

For more information, contact **Darin Kinn** at 469-951-3619. ♣

Weather Tonight Mostly clear and cooler. Low around 60.	Sat. Night Becoming mostly cloudy by end of the arena show. Low around 65.
Wise Tomorrow Mostly sunny, cloudy after lunch. High near 90.	Sunday Mostly cloudy with showers and thunderstorms likely, mainly in the afternoon. High of 85 to 90.

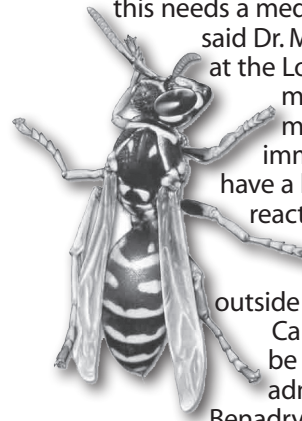
'Bee' prepared

Normally quiet insects, bees sometimes get aggressive when their territory is threatened. With nearly 50,000 Scouts and Scouters at Fort A.P.Hill, we are a threat to bees.

If you see bees, report them to your subcamp staff.

Instruct your Scouts to stay away from these areas. If stung, scrape off the stinger if a stinger is present. Usually only honey bees and a couple other species have stingers. You should then sit down, keep quiet, and apply ice to the sting area.

A mosquito bite-like bump will appear. Any reaction different than this needs a medical evaluation, said Dr. Mark Hroncich, at the Longstreet



medical tent. Seek medical attention immediately if you have a known allergic reaction to stings or persistent symptoms outside a normal reaction.

Caution should be used when administering Benadryl for a sting. If a Scout regularly takes Benadryl, then it is OK to give it, said Hroncich. However, if Benadryl is a new medication, then the sting should be evaluated by the medical staff to determine if Benadryl is an appropriate medication to use.

You can minimize your attractiveness to bees by wearing darker colors, specifically dark blues and grays. Bees are attracted to pinks, yellows, and reds, colors that resemble flowers. They also like sweets, sweet beverages, and trash. ♣

Earn the Coast Guard patch

Tell your Scouts about the Coast Guard exhibit on Thomas Road. They can earn a limited-edition patch by working through the hands-on exhibits and challenges offered. For more information, contact **Mike McCormack** at 508-965-1075. ♣

(Photo by F Harvell)



A dancer from the Tipisa Lodge performing in the OA pow wow.

Join the fun of pow wow at Indian Village

The OA at Indian Village, just west of Merit Badge Midway, will host a pow wow from 8 p.m. to 10 p.m. Sunday in the dance arbor. Everyone is welcome and advised to bring a chair since seating is limited.

Attendees can view and participate in the dances, and take part in interactive stations. There will be an exhibition by the top 10 dancers from NOAC (National Order of the Arrow Conference). Anyone with Indian clothing can dance in the opening procession, but all will have the opportunity to dance later in the pow wow.

The pow wow will showcase American Indian heritage and be conducted in authentic Indian style. There is an OA Village activity card and when four of the seven items on the card are completed, a special OA Village patch will be awarded.

For more information, contact **Ron Bell** at 404-406-3218. ♣

Paddle Safe, Paddle Smart training

Paddle Safe, Paddle Smart (PS2) leader training will be offered from 10 a.m. and 2 p.m. daily at the jamboree boating headquarters by Travis Lake (except when in conflict with the arena show). These sessions will highlight tips and tricks for teaching beginning and experienced Scouts and Scouters. Topics include how to put on lifejackets, environmental ethics, and how best to present the material to impact your Scouts and keep them safe on the water.

For more information contact **Jay Fox** at 404-406-3645. ♣

Towing policy

Here's some information regarding towing:

- Vehicles must have an appropriate BSA permit. Base permits are NOT sufficient. Stickers (A, E, V, or S) must be displayed on the lower left/driver's side of windshield.
- Vehicles improperly stickered, missing passes, or parked in inappropriate locations may be towed.
- Towed vehicles will be impounded at the jamboree transportation lot at the southeast corner of Campbell Road and A.P.Hill Drive. The lot is open 24 hours a day.
- To get your vehicle back, you must show some evidence of ownership/responsibility and pay the towing fee of \$100. Cash only.

For more information, contact **Security/Traffic/Parking** at 404-408-3336. ♣

PATCH CONTEST VOTING BEGINS SUNDAY

The deadline for entering the *Leaders' Update* jamboree patch contest is 10 p.m. Friday. Please bring your patches to the *Leaders' Update* office in the Longstreet media area. Vote for your favorite patch starting Sunday at <http://leadersupdate.bsajamboree.org>. Winners to be announced Tuesday.

SUGGESTED ARENA SHOW CHECKLIST

ACCEPTABLE ITEMS:

- Water/canteen
- Snacks
- Rain gear
- Cell phones with ICE numbers
- Day pack (with items for post event)
- Camera
- Soft recliner (low profile)
- Camelbak
- Scout hat
- Sunscreen/hand sanitizer/lip balm
- Flashlight
- Personal first aid kits
- Jamboree site map/ID

DO NOT BRING THESE ITEMS:

- Knives
- Folding Chairs
- Backpacks
- Laser pointers
- Umbrellas
- Flip flops

Water for the arena show

Staying hydrated is very important for Saturday's arena show. Everyone should be properly hydrated before going to the show. Additional bottles of water will be available, over and above the two quarts of water each person is to bring with them. ♣

Take home memories, not a sunburn

Follow a few simple guidelines to avoid a painful sunburn and possible long-term damage to your skin.

- Apply sunscreen with sun protective factor (SPF) 15 or higher. Pay particular attention to your face, neck, ears, and arms.
- Wear clothing to protect exposed skin.
- Wear a hat with a wide brim to shade the face, head, ears, and neck.
- Wear sunglasses.
- Seek shade, especially during midday hours.

For more information, contact **Lisa A. Forsyth** at 210-569-2535. ♣

Star Search

Throughout jamboree, various areas will be hosting celebrities. If your Scouts would like to see some of these people, here is a schedule:

Saturday

- **Gretchen Bleiler**—U.S. Olympic silver medalist in halfpipe snowboarding, mountain boarding area, 10 a.m. to noon.
- **Burton Roberts**—*Survivor* contestant, NESAs booth, Thomas Road, 1 p.m. to 5 p.m.
- **Scott Strauss**—911 survivor, NESAs booth, Thomas Road, 9 a.m. to noon.
- **Bradley Roy**—2010 BASS Rookie of the Year for the pro bass circuit, Fish Hook Lake, 9 a.m. to 11 a.m. and 2 p.m. to 4 p.m.
- **Mike Rowe**—*Dirty Jobs* Discovery Channel host will speak at the closing arena show.
- **Switchfoot**—Band will perform at the closing arena show.

Sunday

- **Judge William Sessions**—Former FBI director, NESAs booth, Thomas Road, 1 p.m. to 5 p.m.
- **U.S. Rep. Pete Sessions, R-Texas**— NESAs booth, Thomas Road, 1 p.m. to 5 p.m.
- **Marine Band**— Northeast Region stage, 4 p.m. to 5 p.m. and 8:30 p.m. to 9:30 p.m.
- **Navy Band**— Central Region stage, 4 p.m. to 5 p.m. and 8 p.m. to 9 p.m.

Monday

- **Bernard Harris**—Astronaut, National News Media tent, 1 p.m. to 1:30 p.m., Hometown News media tent, 1:30 p.m.

Tuesday

- **Shaun White**—U.S. Olympic gold medalist in halfpipe snowboarding, mountain boarding area, 10 a.m. to noon.
- **Army Drill Team**—7 p.m. to 8 p.m. at the Central Region Stage. ♣

Buddy system

Please follow the rules of S.A.F.E.T.Y., particularly the letter A: Always have a buddy.

Scouts and Scouters have this information on page 36 of your Scout Guide and on your green hangtag.

There are many Scouts around the jamboree who are walking without buddies. A buddy is for a Scout's safety. Remind Scouts to find a buddy and keep one with them as they walk around jamboree.

When you leave your troop site, hike with one or two buddies. Stay on designated trails and walkways, and follow instructions of traffic and safety personnel. ♣

Patches for hospitalized Scouts

Jamboree chaplains stay 24-hours a day with any Scout who is hospitalized offsite, and visit twice daily any Scout at Jambo General. The chaplains have been offering the Scouts patches as a way to "break the ice" and start a dialogue.

If you have extra patches that you would be willing to contribute to this effort, please drop them off at the chaplain's tent by the entrance to Merit Badge Midway. For more information, call **Kleet Barclay** at 334-430-3356. ♣